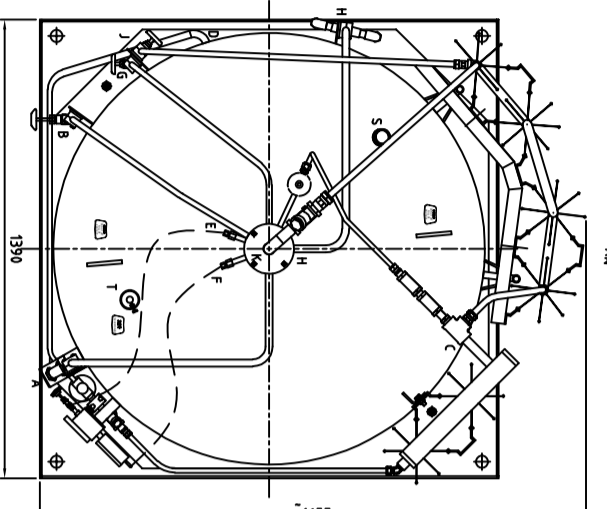
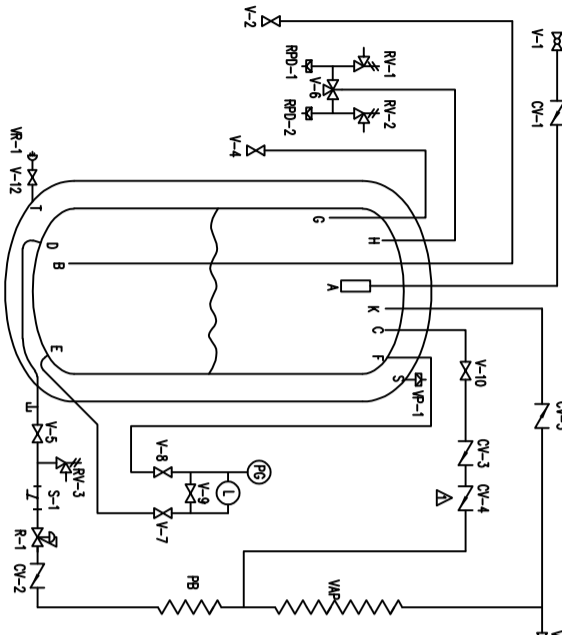


代号	名称	规格	品牌/产地	备注
V-1	NONCIRCULATURE 阀门表		CHART CHINA	
V-2	TOP FIL VALVE	T712022		
V-3	LIQUID USE VALVE	11765955		
V-4	GAS USE VALVE	11905964		
V-5	VENT/FULL TRYCOCK VALVE	19095956		
V-6	LIQUID WITHDRN VALVE	21071145		
V-7	VALVE BALL DIV	11773885		
V-8	LIQUID PHASE	14810961		
V-9	VAPOR PHASE	14810961		
V-10	EQUALIZER	21208779		
V-12	REG ISO VALVE PB	11903999		
CY-1	VALVE VACUUM GAUGE TUBE	10482381		
CY-2	CHECK VALVE	13620233		
CY-3	CHECK VALVE	20891716		
CY-4	CHECK VALVE	11051090		
CY-5	CHECK VALVE	11051090		
L	LEVEL INDICATOR	20891715		
Pg	PRESSURE INDICATOR	21292711		
R-1	REGULATOR PBE-1	21182929		
RV-12	RELIEF VALVE	11635511		
RP-3	LINE RELIEF VALVE	2073890C		
RP-12	LINE RELIEF VALVE	11505995		
VR-1	RUPTURE DISC 1 II	21008377		
VR-1	VACUUM READOUT	BS48 BRS 3KSS DISC 58P/SL/HALI		
VR-1	VACUUM PUMPOUT	HASTINGS 1435/15 #0V-DMS		

名称	规格	品牌/产地	备注
物料名称	规格	品牌/产地	备注
WATERCOST	#CN&L&RPMSE		
REGO #179464ADAB			
REGO #179464DA (P1-MARK)			
REGO #SRP9104BW			
REGO #17946403-57			
REGO #CHM250G			
REGO #44M-VAL-K-SS			
REGO #179452 NSS SP-80			
PARKER #44M-VAL-K-SS			
REGO #179452 NSS SP-80			
HOME 41HL28			
GENERANT CV-513B-T-1-5			
BAITU #DHX-15			
GENERANT CV-513B-T-1-X			
GENERANT CV-513B-T-1-X			
BAITU #DHX-25			
Dp 0-110 inch H2O/OR/Ashecot			
WKA #212.20.100 BAR, MPa, P50			
CASH-A40CCSZ2TH1-E			
REGO #PRV932159IC			
REGO #PRV9321600 TELON SEAT			
BS48 BRS 3KSS DISC 58P/SL/HALI			
HASTINGS 1435/15 #0V-DMS			
CHART			

名称	规格	品牌/产地	备注
WATERCOST	#CN&L&RPMSE		
REGO #179464ADAB			
REGO #179464DA (P1-MARK)			
REGO #SRP9104BW			
REGO #17946403-57			
REGO #CHM250G			
REGO #44M-VAL-K-SS			
REGO #179452 NSS SP-80			
PARKER #44M-VAL-K-SS			
REGO #179452 NSS SP-80			
HOME 41HL28			
GENERANT CV-513B-T-1-5			
BAITU #DHX-15			
GENERANT CV-513B-T-1-X			
GENERANT CV-513B-T-1-X			
BAITU #DHX-25			
Dp 0-110 inch H2O/OR/Ashecot			
WKA #212.20.100 BAR, MPa, P50			
CASH-A40CCSZ2TH1-E			
REGO #PRV932159IC			
REGO #PRV9321600 TELON SEAT			
BS48 BRS 3KSS DISC 58P/SL/HALI			
HASTINGS 1435/15 #0V-DMS			
CHART			



制造与检验要求 Fabrication and inspection specifications	
材料 Material	316L SS
材料规格 Material Specification	ASTM A312-01a, A312-01a-2015
壁厚 Wall Thickness	3.0mm (1/8")
压力 Pressure	0.552MPa (80 PSI)
温度 Temperature	0°C to 100°C
设计温度 Design Temperature	0°C
工作压力 Working Pressure	0.552MPa
试验压力 Test Pressure	1.656MPa
设计系数 Design Factor	0.8
材料屈服强度 Yield Strength	193 N/mm²
材料抗拉强度 Tensile Strength	515 N/mm²
材料延伸率 Elongation	40%
材料硬度 Hardness	HRC 20-22
材料冲击韧性 Impact Toughness	193 J
材料腐蚀 Corrosion	见 GB/T150.4
材料焊接 Welding	见 GB/T150.4
材料无损检测 Non-destructive Testing	见 GB/T150.4
材料热处理 Heat Treatment	见 GB/T150.4
材料表面处理 Surface Treatment	见 GB/T150.4
材料标识 Material Marking	见 GB/T150.4
材料检验证书 Material Certificate	见 GB/T150.4
材料验收 Material Acceptance	见 GB/T150.4

设计参数 Design data	
设计压力 Design Pressure	0.552MPa
设计温度 Design Temperature	0°C
工作压力 Working Pressure	0.552MPa
试验压力 Test Pressure	1.656MPa
设计系数 Design Factor	0.8
材料屈服强度 Yield Strength	193 N/mm²
材料抗拉强度 Tensile Strength	515 N/mm²
材料延伸率 Elongation	40%
材料硬度 Hardness	HRC 20-22
材料冲击韧性 Impact Toughness	193 J
材料腐蚀 Corrosion	见 GB/T150.4
材料焊接 Welding	见 GB/T150.4
材料无损检测 Non-destructive Testing	见 GB/T150.4
材料热处理 Heat Treatment	见 GB/T150.4
材料表面处理 Surface Treatment	见 GB/T150.4
材料标识 Material Marking	见 GB/T150.4
材料检验证书 Material Certificate	见 GB/T150.4
材料验收 Material Acceptance	见 GB/T150.4

管口表 NOZZLE LIST	
管口名称 Nozzle Name	规格 Specification
A	1/2" FNPT
B	3/8" FNPT
C	3/4" FNPT
D	1/2" FNPT
E	1/4" FNPT
F	1/4" FNPT
G	3/8" FNPT
H	1/2" FNPT
J	1/2" FNPT
K	3/8" FNPT
L	1/2" FNPT
M	1/2" FNPT
N	3/8" FNPT
O	1/2" FNPT
P	1/2" FNPT
Q	3/8" FNPT
R	1/2" FNPT
S	3/8" FNPT
T	1/2" FNPT

修改记录 Revision History	
修改内容 Description	修改日期 Date
1. 首次设计	2018.10.24
2. 根据客户意见修改	2018.12.03
3. 根据客户意见修改	2019.01.15
4. 根据客户意见修改	2019.02.28
5. 根据客户意见修改	2019.03.15

CUSTOMER DRAWING

设计名称: PERMA-CYL 2000VHP GB CS

设计比例: 1:15

设计日期: 2018.10.24

设计人员: [Signature]

审核人员: [Signature]

批准人员: [Signature]

共 1 页 第 1 页

CHART 常州橙州工程系统(常州)有限公司
CHART Organic Engineering System (Changzhou) Co., Ltd